

# Drills and Tappers

## DRILLS with silencer and two-speed trigger

Yokota's YRD series are applicable for versatile use in drilling work of window metal frames, prefabricated buildings, automobiles, vehicles, aircraft, home electrical apparatuses, etc.

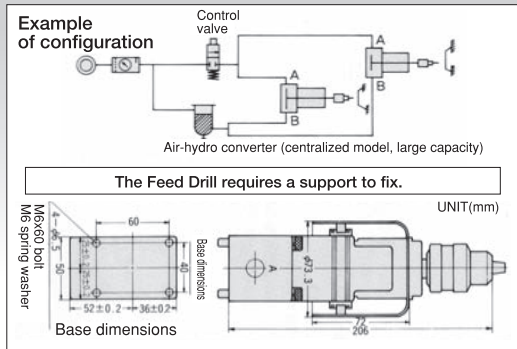
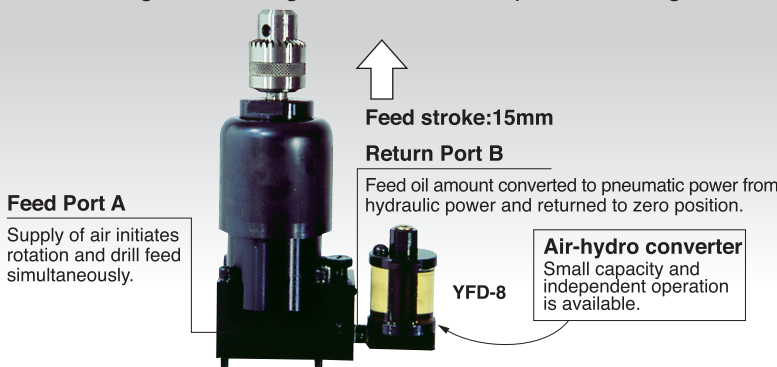


Model	Drilling Capacity mm(in)	Free Speed (Approx.) r.p.m.	No Load Air Consumption (Approx.) l/min(ft <sup>3</sup> /min)	Overall Length (about) mm(in)	Weight With Chuck kg(lb)	Spindle Offset (about) mm(in)	Chuck Nominal Size (Morse Tapper socket No.)	Noise Level No Load 1 m dB (A)	Air Inlet Thread (Pipe Thread) Rc	Air Hose Size mm(in)	Air Pressure MPa(lb/in <sup>2</sup> )
YRD-6N	6.35 (1/4)	2800	400 (14.1)	153 (6.0)	0.89 (2.0)	20.5 (0.8)	6.5EL	77	1/4	9.5 (3/8)	0.6 (85)
YRD-8N	9.5 (3/8)	1850	550 (19.4)	183 (7.2)	1.37 (3.0)	25.5 (1.0)	10EL	80	1/4	9.5 (3/8)	0.6 (85)
YRD-10N	9.5 (3/8)	1000	650 (23.0)	214 (8.4)	1.50 (3.3)	25.0 (1.0)	10EL	80	1/4	9.5 (3/8)	0.6 (85)
YRD-13N	13.0(33/64)	700	800 (28.3)	214 (8.4)	1.60 (3.5)	22.0 (0.9)	13EL	80	1/4	9.5 (3/8)	0.6 (85)
40R-YRD	44(1 47/64)	210	1900 (67.1)	442 (17.4)	16 (35)	-	No.4	88	1/2	12.7 (1/2)	0.6 (85)

■ YRD-6N~13N have a hose nipple and a chuck handle. 40R-YRD have a hose nipple and a silencer.

## FEED DRILLS with air-hydro converter, built-in speed controller and silencer

YFD Feed Drill is integrated with speed controller to save thin steel plate drilling work. Using a switch valve, solenoid valve, etc., it can operate one axis or multi axes and finish drilling work during off time of other operation using timer setting.



Model	Drilling Capacity mm(in)	Free Speed (Approx.) r.p.m.	No Load Air Consumption (Approx.) l/min(ft <sup>3</sup> /min)	Overall Length (about) mm(in)	Weight With Chuck kg(lb)	Feed Length mm(in)	2 Spindles Min. Pitch mm(in)	Oil Transfer Amount Per 1 Cycle c.c.	Chuck Nominal Size (Morse Tapper socket No.)	Air Inlet Thread (Pipe Thread) Rc	Air Hose Size mm(in)	Air Pressure MPa(lb/in <sup>2</sup> )
YFD-8	8.5(21/64)	2200	450 (15.9)	206 (8.1)	3.4 (7.5)	15 (0.6)	75 (3)	9	10EL	1/4	9.5 (3/8)	0.6 (85)

■ Standard Accessory : 1 pce. of chuck handle

## TAPPERS

Two push buttons are provided for forward and reverse rotation to provide immediate operation. Compact and light weight design relieve operator's fatigue.



Model	Tapping Capacity mm(in)		Right/Left Free Speed (Approx.) r.p.m.	Load Air Consumption (Approx.) l/min(ft <sup>3</sup> /min)	Overall Length (about) mm(in)	Weight With Chuck kg(lb)	Air Inlet Thread (Pipe Thread) Rc	Air Hose Size mm(in)	Noise Level No Load 1 m dB (A)	Air Pressure MPa(lb/in <sup>2</sup> )	Silencer
	Aluminum	Iron									
YT-6	8 (5/16)	6 (1/4)	2100	400 (14.1)	196 (7.7)	1.29 (2.8)	1/4	9.5 (3/8)	100	0.6 (85)	
YT-6F	8 (5/16)	6 (1/4)	1800	300 (10.6)	196 (7.7)	1.30 (2.9)	1/4	9.5 (3/8)	90	0.6 (85)	●

■ All models have a hose nipple and a chuck handle

FASTENING TOOLS

DRILLS AND TAPPERS

GRINDERS

PERCUSSIVE TOOLS AND OTHERS

RECOMMENDED PRODUCTS